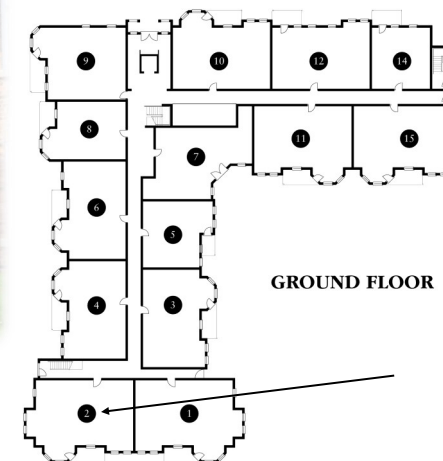


Apartment 2

Apartment 2 is one of the four largest apartments at Middleton Woods at over 1,000 sq ft. It is located on the ground floor and occupies a prime south and west facing position at the front of the development, with views over the main gardens and the Cleveland Hills.



Apartment 2 97 m² = 1,043 sq ft

Living Room 6.700m x 6.914m = 21'0" x 22'8"

Kitchen 3.350m x 2.250m = 11'0" x 7'5"

En Suite 2.860m x 2.260m = 9'5" x 7'5"

Bedroom 1 3.050m x 5.850m = 10'0" x 19' 2"

Bedroom 2 2.550m x 3.950m = 8'4" x 13'0"

WC / Shower 1.450m x 2.250m = 4'9" x 7'5"

Middleton Hall Retirement Village, Middleton St George, Darlington, Co Durham DL2 1HA

Tel: 01325 332207 Web: www.middletonhallretirementvillage.co.uk